

Yagi VHF ANTENNA

Model : YGA-162



1. GENERAL DESCRIPTION

Model No
YGA-162

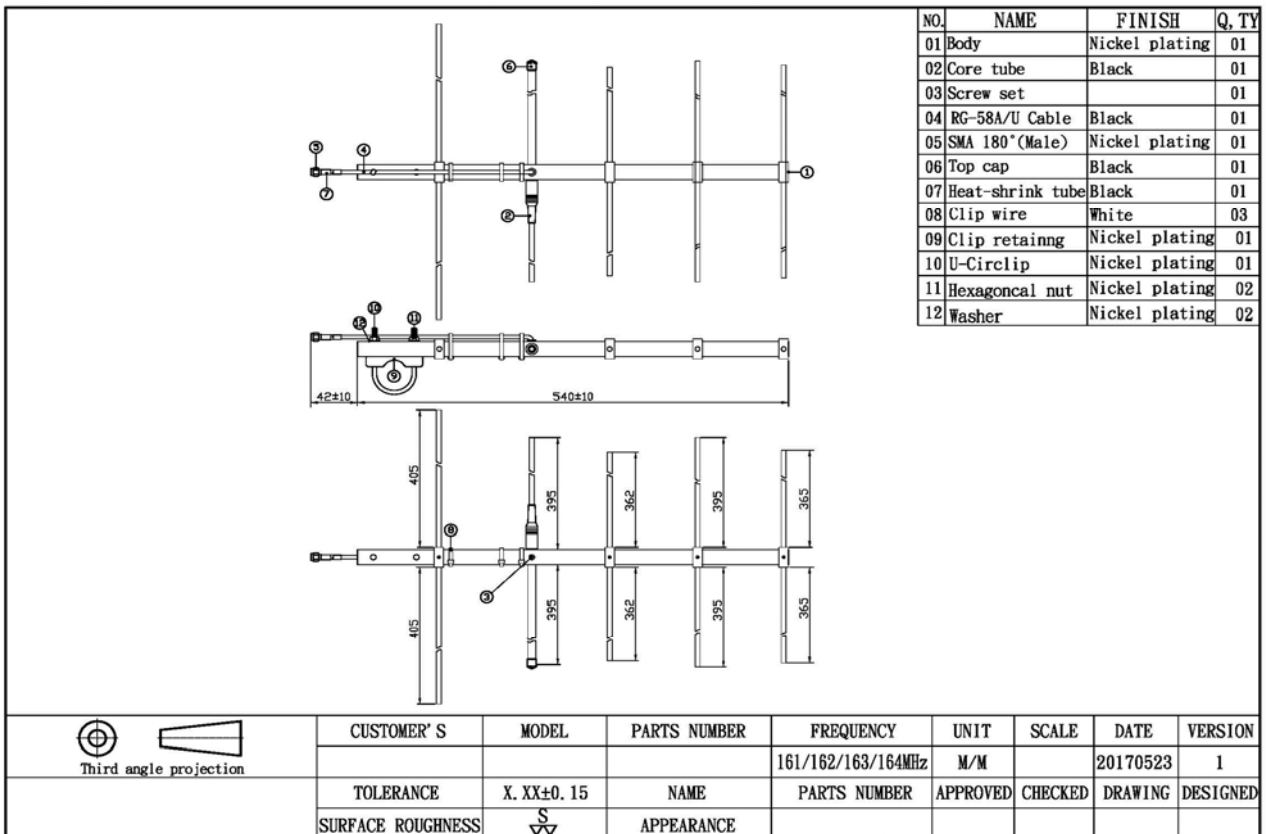
1.1 Electrical Properties

Parameter	Description
Frequency Band	161/162/163/164MHz
Nominal Impedance	50 ohm
Polarization	Vertical
V.S.W.R	2.0:1

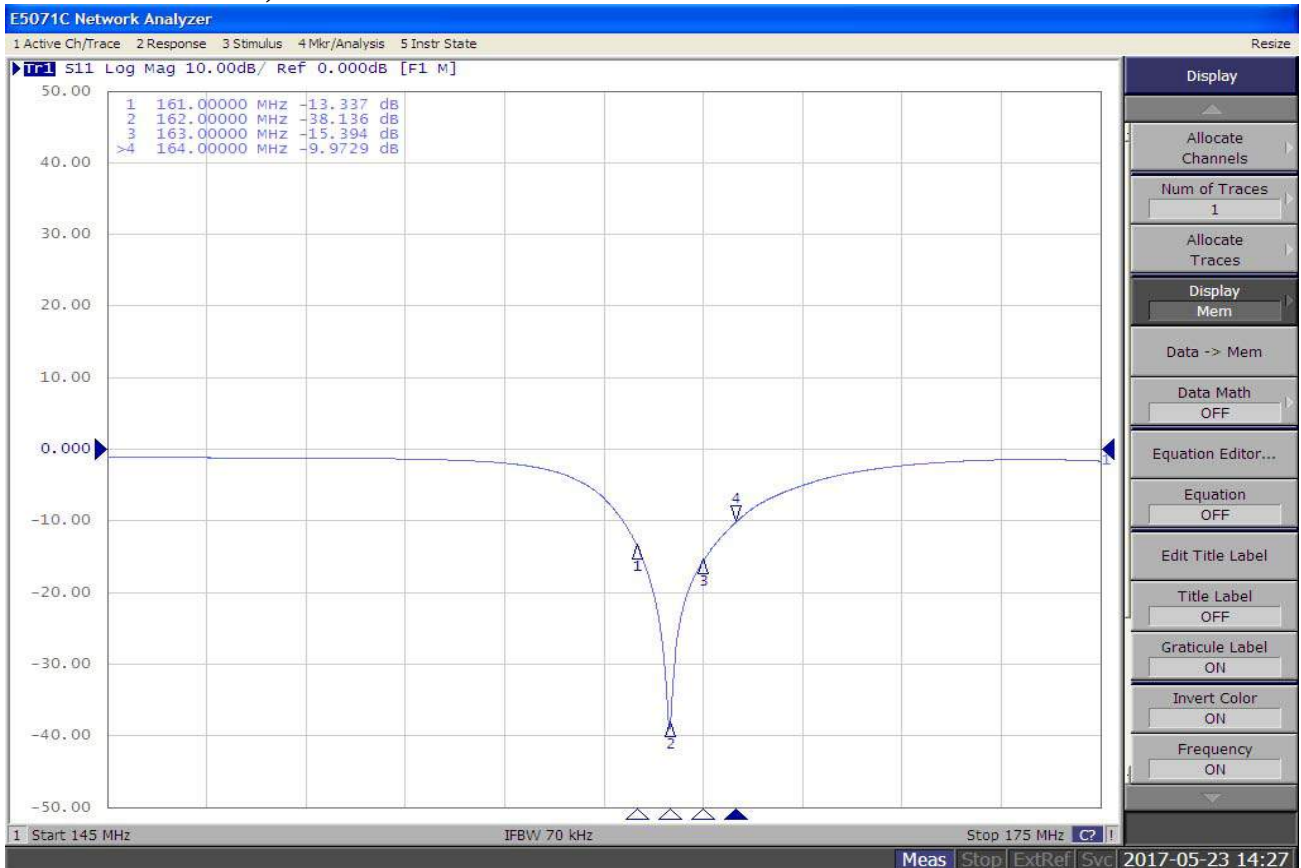
1.2 Mechanical Properties

Parameter	Description
Antenna Type	External Antenna
Touch Type	Screw Type
Connector Type	SMA 180° (Male)
Antenna Dimensions	540 mm \pm 10/42mm \pm 10
Operating Temperature Range	-30°C~+70°C
Storage Temperature Range	-30°C~+70°C

2. Appearance



3. Return Loss, V.S.W.R. and Smith Chart

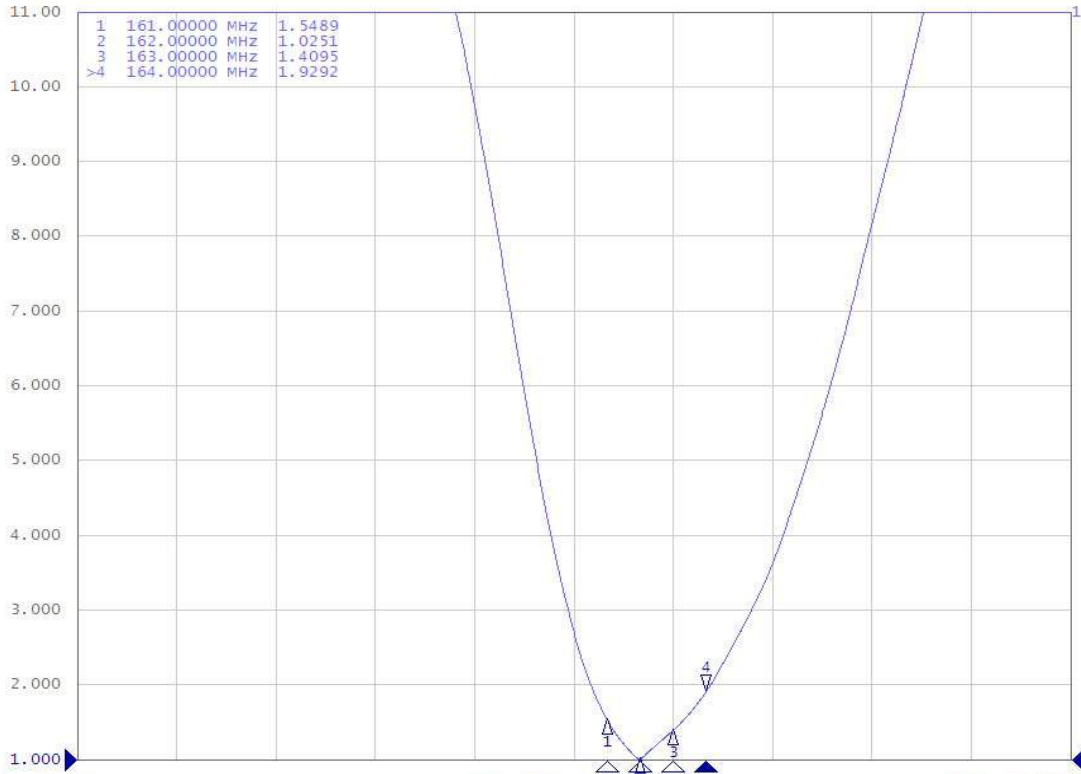


E5071C Network Analyzer

1 Active Ch/Trace 2 Response 3 Stimulus 4 Mkr/Analysis 5 Instr State

Resize

Tr1 S11 SWR 1.000/ Ref 1.000 [F1 M]



1 Start 145 MHz IFBW 70 kHz Stop 175 MHz C?

Meas Stop ExtRef Svc 2017-05-23 14:28

Format

SWR

Log Mag

Phase

Group Delay

Smith

Polar

Lin Mag

SWR

Real

Imaginary

Expand Phase

Positive Phase

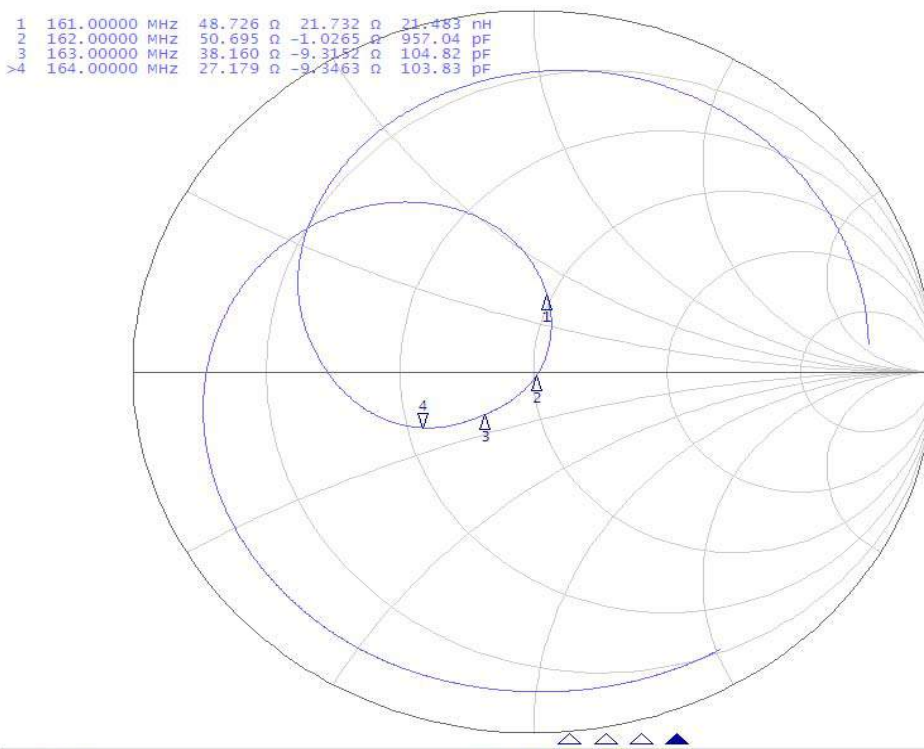
Return

E5071C Network Analyzer

1 Active Ch/Trace 2 Response 3 Stimulus 4 Mkr/Analysis 5 Instr State

Resize

Tr1 S11 smith (R+jX) scale 1.000U [F1 M]



1 Start 145 MHz IFBW 70 kHz Stop 175 MHz C?

Meas Stop ExtRef Svc 2017-05-23 14:28

Format

Smith (R+jX)

Log Mag

Phase

Group Delay

Smith

R + jX

Polar

Lin Mag

SWR

Real

Imaginary

Expand Phase

Positive Phase

Return